

## **FIRE PREPAREDNESS WORKS NOTIFICATION**

**Selective stump removal will take place in Kinglake National Park to reduce bushfire risk and improve fire and emergency access.**

**Date:** Late October to Early November 2022

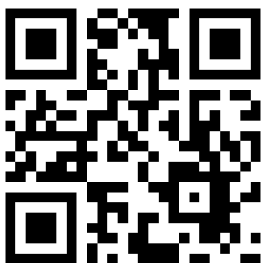
**Duration:** Approximately 2 weeks (weekdays only)

**Location:** Road 1, Kinglake National Park (see map)

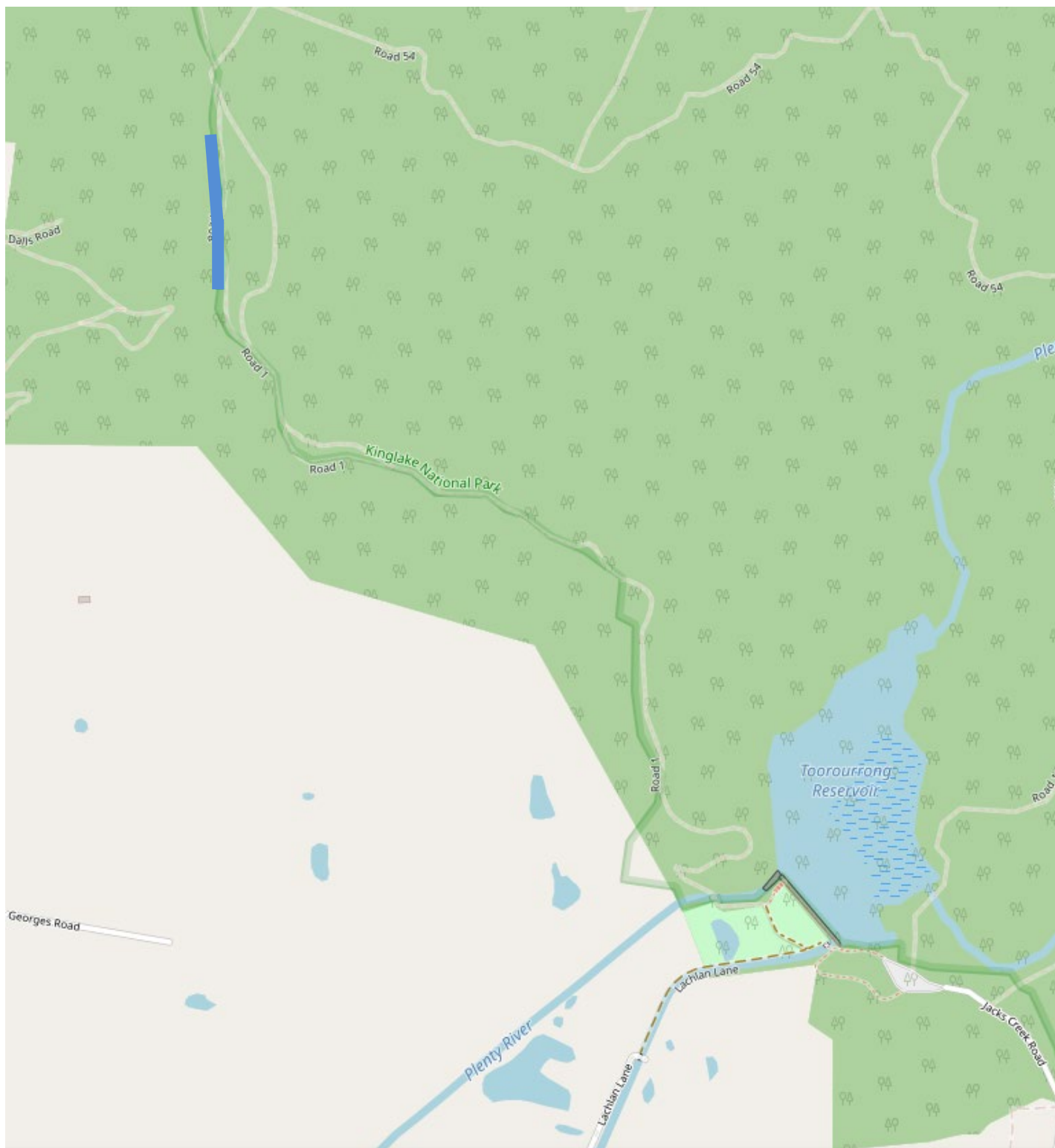
**Impact:** **No park access or tracks are impacted by these works.** Park users at Toorourrong Reservoir Park may see and hear machinery and crews.

Environmental and cultural heritage assessments have been undertaken to ensure important areas are protected.

**Why:** These works are to improve fuel break access and safety for firefighting, planned burning and emergency access.



For more information about this work call Parks Victoria on 13 1963 or visit [parks.vic.gov.au](https://parks.vic.gov.au).



— The blue line shows the location of the fuel break improvement works for 2022/23.

The scheduling and duration of work can sometimes change depending on conditions.