

FIRE PREPAREDNESS WORKS NOTIFICATION

Roading works, selective vegetation mulching and hazardous tree removal will take place in Woodlands Historic Park to improve fire and emergency access and reduce bushfire risk

Date: Early December 2022

Duration: Approximately 4 weeks (weekdays only)

Location: Gellibrand Hill, Woodlands Historic Park (see map)

Impact: **Work crews and heavy machinery will be working in this area, so there will be restricted access during works.** If you must use the tracks, follow the instructions of the crew working on site.

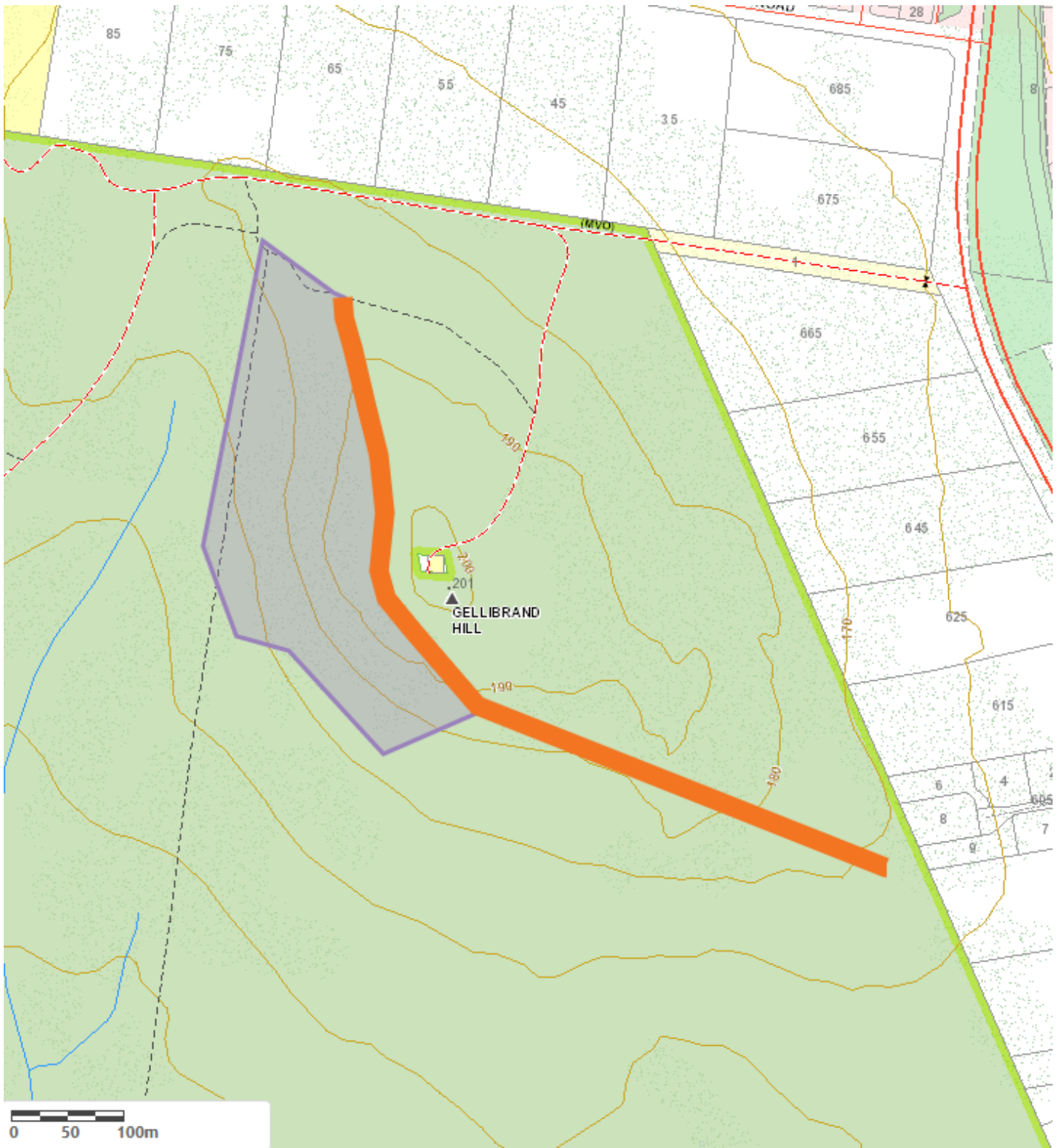
After the work is complete, the absence of vegetation will be noticeable, the area will look more open, and this may be confronting for regular park visitors.

Environmental and cultural heritage assessments have been undertaken to ensure important areas are protected.

Why: These works are to reduce bushfire risk and improve fuel break access and safety for firefighting, emergencies, planned burning and our annual fuel break grass slashing program.



For more information about this work scan the QR code, call Parks Victoria on 13 1963 or visit parks.vic.gov.au.



- The orange line shows the locations of the roading works for 2022/23.
- The purple area shows the location of the mulching and hazardous tree removal works for 2022/23.

The scheduling and duration of work can sometimes change depending on condition.