

Reducing bushfire risk

Woodlands Historic Park

2022-2023 planned activities

Forest Fire Management Victoria (FFMVic) works year-round to reduce the risk of grassfires and bushfires in Woodlands Historic Park. 2022-2023 risk reduction activities include planned burning, fuel break maintenance, grass slashing and mulching.

Grassfires and bushfires are a natural part of the Australian landscape and cannot be eliminated. However, effective planning and preparation can reduce their negative impacts.

One of the main ways to reduce grass and bushfire risk is to reduce the amount of fuels – fuels are grass, leaf litter, twigs, bark and other vegetation that can burn during a fire. We also use fuel breaks to reduce risk.

Planned burning

Planned burning involves lighting controlled fires under mild weather conditions to reduce fuels. This helps reduce the risk from grassfires and bushfires.

Planned burning is also used in the grasslands of western Melbourne to improve habitats for native plants and animals to live in, and to stop some types of plants from crowding out others. They even help kill some of the weeds that compete with native plants.

The following risk reduction burn will be carried out in autumn 2022 if conditions are suitable:

- **26 hectares near Livingston Drive North**

Sign up for notifications about planned burns about to happen near you at 'Planned Burns Victoria' www.vic.gov.au/plannedburns.

Or call the VicEmergency Hotline on freecall 1800 226 226 or download the Vic Emergency app to see the location of ignited burns.



Planned burn in a western Melbourne park

Mulching

Mulching is a fuel management tool used as an alternative to planned burns. This method allows fuels such as shrubs and other mid-storey vegetation to be mechanically broken down, which can help reduce the severity of a fire. Mulching can also help reduce and control weeds or invasive species.

We will be **mulching a 5.4 hectare block along the west side of Gellibrand Hill** this season, to help reduce fire risk and to control woody weedy species.



Mulching in Woodlands Historic Park to protect Red River Gums

Reducing bushfire risk

Woodlands Historic Park 2022-2023

Fuel breaks and mechanical fuel reduction

Fuel breaks create a break in vegetation in the landscape. A fuel break alone won't stop a fire but can be very helpful to firefighters by providing access for vehicles and machinery to respond if a fire occurs.

Controlled fires called backburns can also be lit between a fuel break and an approaching fire to remove fuel and stop the fire or reduce its intensity. Fuel breaks are usually between 6–20 metres wide.

In 2022-2023 we will carry out the following **fuel break improvement** activities to reduce grassfire and bushfire risk in and around Woodlands Historic Park:

- **Grass slashing** over 36 kilometres of fuel breaks and tracks to allow fire and management vehicle access
- **Resurfacing** the maintenance vehicle track near Gellibrand Hill

A map of planned activities is included in this flyer.

For information on the location of bushfire risk reduction activities, visit www.ffm.vic.gov.au/ifmp.



Grass slashing a fuel break in a grassland reserve

Values management

Cultural and environmental assessments are carried out for all works to ensure any potential impacts from operations are mitigated or reduced.

Databases such as the Victorian Biodiversity Atlas and the Aboriginal Cultural Heritage Register and Information System (ACHRIS) are used alongside knowledge from local staff and on-site observations.

What you can do to help

For your safety, you need to understand your risk and plan ahead. Know what to do on hot, dry, windy days and plan for all situations.

Anyone entering parks and forests during the bushfire season needs to stay aware of forecast weather conditions. Check the Fire Danger Rating and for days of Total Fire Ban at www.emergency.vic.gov.au, on the VicEmergency smartphone app or call the VicEmergency Hotline on 1800 226 226. No fires may be lit on Total Fire Ban days.

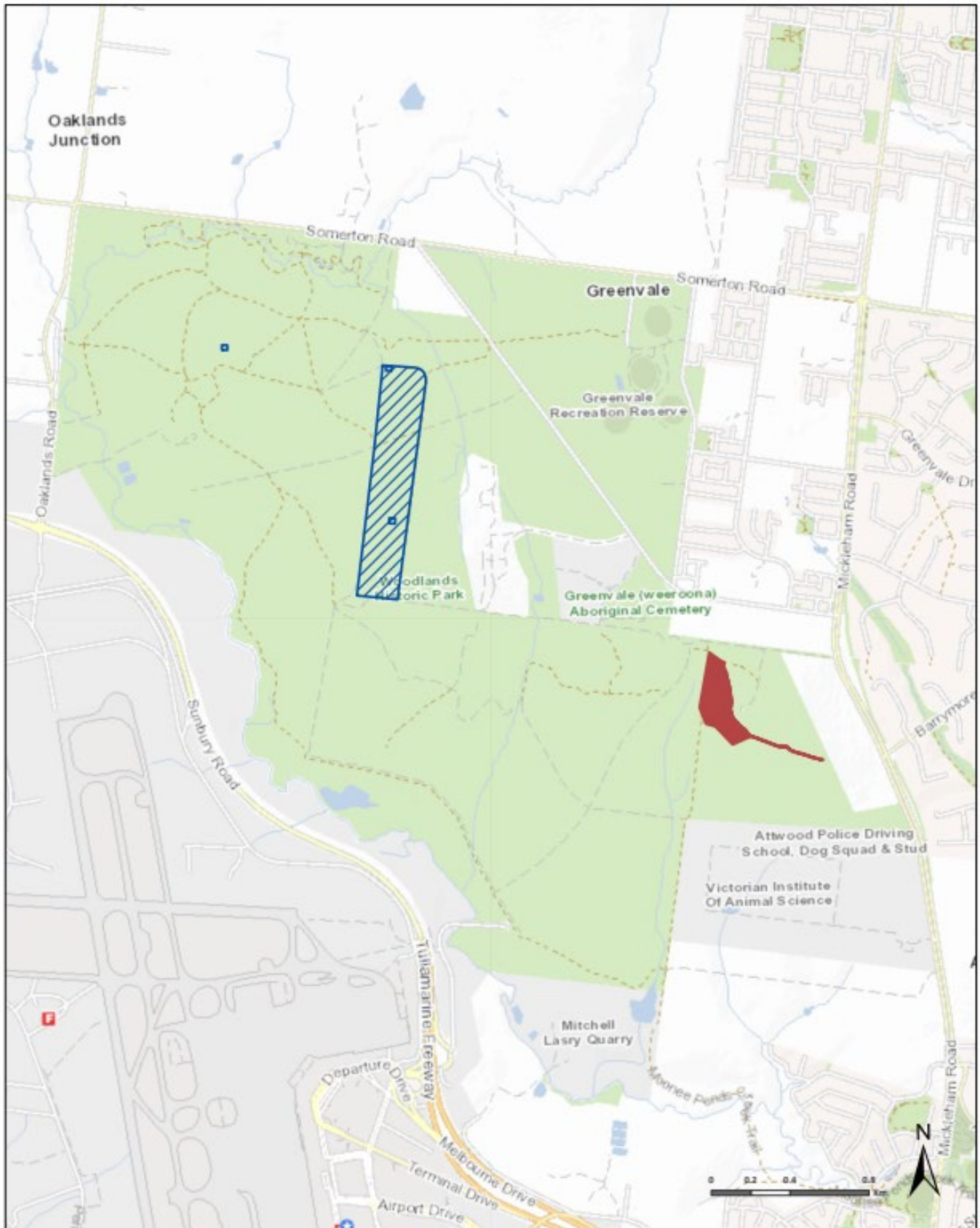
On Catastrophic Fire Danger Rating days Woodlands Historic Park will be closed for public safety. Warnings signs may be erected, but do not expect a personal warning.


Check the latest conditions at www.parks.vic.gov.au or by calling 13 1963.

For more information about preparing your home and staying safe, please visit: www.cfa.vic.gov.au/plan-prepare

Reducing bushfire risk

Woodlands Historic Park 2022-2023



 Planned Burn (FFMVic)

 Mulching, Fuel Break and Roading Improvements